



Motorcycle Lift JMP Lux 300 EH

For motorcycles and scooters up to an overall weight of 300 kg.



-
- ⓔ Motorcyle Bike Lift "JMP Lux 300 EH"
 - ⓔ Plataforma moto "JMP Lux 300 EH"
 - ⓔ Ponte sollevatore per motociclette "JMP Lux 300 EH"
 - ⓔ Podošnik motocyklowy "JMP Lux 300 EH"
 - ⓔ Motorcyle Lift "JMP Lux 300 EH"
 - ⓔ Plošinový zvedák „JMP Lux 300 EH“
 - ⓔ Motorheftafel 'JMP Lux 300 EH'
 - ⓔ Pont élévateur pour motos „JMP Lux 300 EH“

Johannes J. Matthies GmbH & Co. KG
Hammerbrookstr. 97
20097 Hamburg, Germany
www.jmproducts.eu
info@jmproducts.eu



JM-No. 674 02 92

Contents:

1. Summary of safety instructions	1
2. Important information for your safety	1
3. Scope of supply	1
4. Technical data.....	1
5. Area of use	1
6. Installation	2
7. Operation	2
8. Maintenance and safety	3
9. Troubleshooting	3
10. Spare parts	4
11. Circuit diagrams.....	5
12. Hydraulics	5
13. EC Declaration of Conformity	6

Contact

Manufacturer:
Johannes J. Matthes GmbH & Co. KG
Hammerbrookstr. 97
20097 Hamburg
Tel. +49 (0) 40 2 37 21 - 0
Fax. +49 (0) 40 2 37 21 - 363
Internet: <http://www.matthes.de>
E-Mail: info@matthes.de

Service and repair:
Matthes Workshop Service
Hammerbrookstr. 78
20097 Hamburg
Tel. (0 40) 2 37 21-120
Fax (0 40) 2 37 21-199
Internet: <http://www.matthes.de>
E-Mail: service@matthes.de

Original operating instructions

1. Summary of safety instructions:

- 1.1 These instructions must be read before use.
- 1.2 The lift should only be operated by persons authorised for this purpose.
- 1.3 Ensure that all electrical cables are undamaged at all times to avoid electric shocks.
- 1.4 Ensure that no bodily parts can be clamped or caught when raising and lowering the lift.
- 1.5 Stop any work on the lift immediately in the event of problems and contact the Matthies Workshop Service or your distribution partner.
- 1.6 The lift must be installed on a firm, stable and level support surface.
- 1.7 The working area of the lift must be kept clean and clear.
- 1.8 Ensure when raising and lowering the lift that the vehicle is stably and safely secured. This can either be achieved with an optional wheel clamp, an optional assembly stand or optional lashing straps. Raise the lift platform briefly and ensure that the vehicle is standing safely and correctly.
- 1.9 The operator must maintain visual contact with the lift during raising and lowering of the lift.
- 1.10 Persons should at no time be on the lift.

2. Important information for your safety



Please read these operating instructions carefully and follow the instructions in this manual prior to commissioning the JMP Lux 300 EH lift. Please contact the Matthies Workshop Service in the event of questions.



Caution - electrical voltage. Only entrust installation to a specialist company.

3. Scope of supply

1x pre-assembled JMP Lux 300 EH lift

4. Technical data

Minimum height:	19 cm
Maximum height:	115 cm
Maximum carrying weight:	300 kg
Approx. dead weight:	200 kg
Complete raising:	30 sec
Complete lowering:	30 sec
Supply voltage:	230 VAC, 50 Hz
Power consumption:	0.75 KW
Work surface:	2000 x 650 mm

5. Area of use



The following areas of use are permitted:

- 5.1 The lift should only be used for raising motorcycles, scooters and other two-wheeled vehicles up to a weight of 300 kg.
- 5.2 The lift should be used exclusively in dry indoor spaces for this purpose.
- 5.3 The lift should only be used for briefly lifting to realise maintenance or repairs.
- 5.4 The lift should only be operated by persons who have received intensive instruction in the operation of and safety instructions relating to the lift.



The following areas of use are prohibited:

- 5.5 Use outdoors.
- 5.6 Lifting of vehicles or other equipment that either exceed the permissible carrying weight of 300 kg or are unstable due to their dimensions.
- 5.7 Stepping/climbing onto the lift.
- 5.8 Lifting of persons.

6. Installation



- 6.1. Installation and commissioning of the JMP Lux 300 EH lift should only be realised by qualified persons.
- 6.2. The JMP Lux 300 EH lift should only be installed and operated in dry indoor spaces. A level surface measuring a minimum of 250 x 200 cm is required for installation. The floor should be level to ensure secure stability for the lift and the mechanic working on it. The lift should otherwise be secured to the supporting surface with ground anchors.
- 6.3. Use of the lift in the following spaces is expressly prohibited:
 - a) Rooms where there is a risk of explosion or fire
 - b) Rooms that are wet or damp
 - c) Outdoor areas
- 6.4. Electrical connections: An electrical connection of 240V/16A/50 Hz is required for the JMP Lux 300 EH lift. The JMP Lux 300 EH lift is delivered preassembled to your premises. Please remove the shipping container from the lift and conduct a thorough visual inspection to identify any transportation damage. Please also check all electrical and hydraulic lines for damage.
- 6.5. The electrical connection should only be realised by a qualified electrician. It is imperative that a safe supply line protected against mechanical loads be assured during installation.

7. Operation

The lift may only be operated in compliance with the complete operating instructions. It is therefore imperative that you read this manual thoroughly prior to initial commissioning!

The lift should only be operated by qualified persons. Please note that incorrect operation can lead to severe accidents!

7.1. Raising / Lowering

The lift is controlled using a remote control unit connected by a cable. The lift is raised or lowered for the duration in which the UP  or DOWN  button is pressed. The control deactivates automatically as soon as the respective limit (end) point of the lift is reached.

7.2. Emergency button

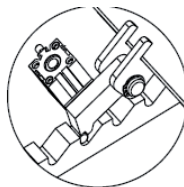
Raising and lowering of the lift can be interrupted at any time with the aid of the emergency button. The emergency button should be depressed for this purpose. The button should be turned to the right to unlock it again.

Emergency button



7.3. Safety catch

In the unlikely event of the hydraulic unit failing, the lift is equipped with a safety catch that protects against any unchecked lowering of the platform.



8. Maintenance and safety

Regular maintenance of the lift is required for safe operation. Please ensure that a complete inspection of the lift is conducted every 24 months at the latest.

8.1. Daily inspection

- Check the smooth and correct function of the safety catch regularly.
 - The safety catch should engage independently and smoothly on raising the lift.
 - The safety catch should activate again independently when the lift descends completely.
 - The limit switch fitted must shut down the pump electrically when the ramp is completely raised.
- Cleaning of the lift.
- Inspection of the limit switch.
- Inspection for oil leaks.

Please contact the Matthies Workshop Service or your distribution partner immediately if any of these safety measures does not function or you are for any reason unsure.

8.2. Weekly inspection

- Lubrication of bearings and hinges.
- Inspection of oil level.

8.3. Monthly inspection

- Inspection of oil lines for leaks and damage.
- Inspection of all moving parts.

9. Troubleshooting

The lift can no longer be raised!

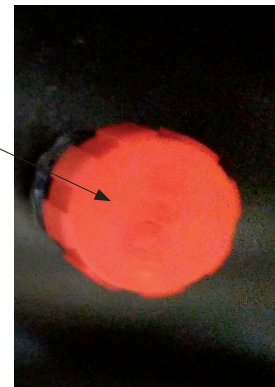
1. Has the additional weight of 300 kg been exceeded?
2. Is the lift correctly connected? Is supply voltage applied? Could the fuse have possibly tripped?
3. Did the lift circuit breaker trip? Ensure that the lift is disconnected from the power supply system and check the fuses.
4. Is adequate hydraulic fluid available? Ensure that the lift is disconnected from the power supply system. Lift the platform manually to the highest position. Remove the plug from the oil tank. This should be practically full. Add HLP10 if necessary (JM No. 558 00 77).

The lift can no longer be lowered!

1. Check whether the safety catch is unlocked and allows the lift to be lowered.
2. Is the lift mechanically blocked? Check the lift for mechanical obstacles.
3. Is adequate hydraulic fluid available? Ensure that the lift is disconnected from the power supply system. Lift the platform manually to the highest position. Remove the plug from the oil tank. This should be practically full. Add HLP10 if necessary (JM No. 558 00 77).



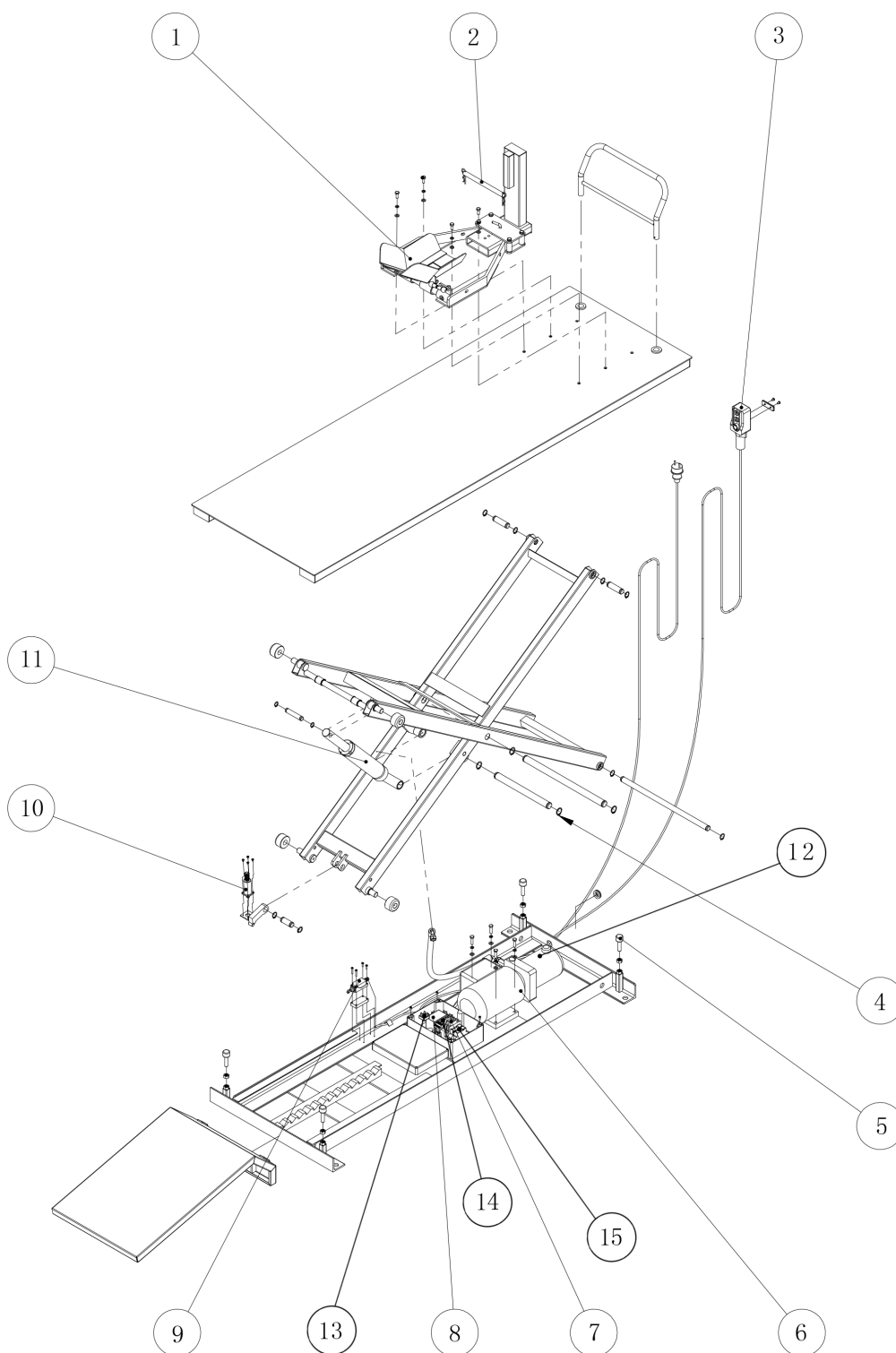
Plug



Please contact the Matthies Workshop Service or your distribution partner if these steps are unsuccessful.

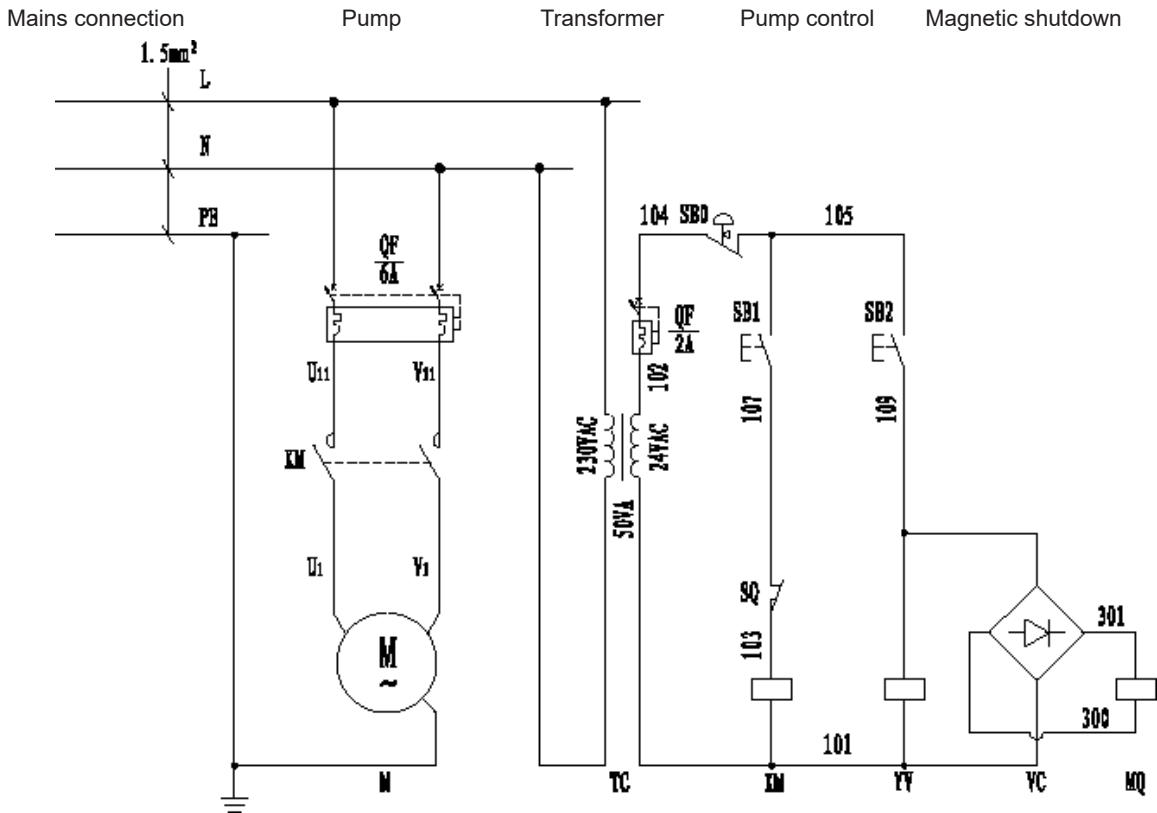
10. Spare parts

Maintenance and repair of the JMP Lux 300 EH lift should only be realised by qualified technicians. Ensure when replacing parts that only spare parts are used that correspond fully to the original components in terms of quality and design. Please contact the Matthes Workshop Service or your distribution partner if necessary to discuss further steps.



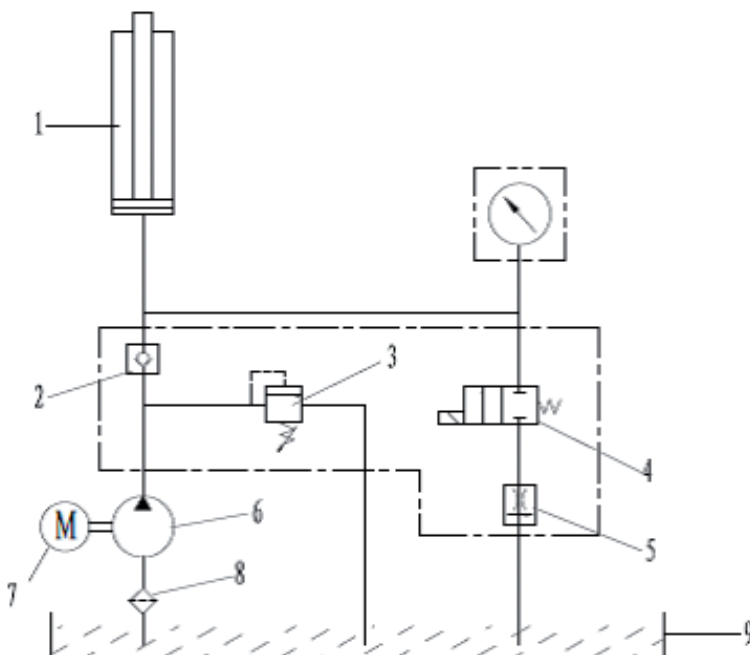
Number	Designation	JM No.	Number	Designation	JM No.
1	Wheel clamp	674 00 24	9	Limit switch	656 00 41
2	Wheel lock	656 00 35	10	Release magnet	652 30 03
3	Remote control unit	652 30 01	11	Cylinder	652 30 02
4	Oil hose connector	652 30 08	12	Lowering valve with coil	652 09 67
5	Rubber buffer	652 02 94	13	Rectifier	652 20 39
6	Complete unit	652 30 07	14	Circuit breaker 2 A 1 pole	652 08 99
7	Contactor	652 40 61	15	Circuit breaker 10 A 2 pole	652 10 56
8	Transformer	652 30 06			

11. Circuit diagrams



SB0	Button for emergency stop	QF	Fuse
SB1	Button for raising	KM	Mains connection
SB2	Button for lowering	YV	Pressure relief valve
SQ	Upper limit deactivation	TC	Transformer
VC	AC/DC converter	MQ	Solenoid

12. Hydraulics



1	Cylinder	4	Lowering valve	7	Pump motor
2	Non-return valve	5	Throttle valve	8	Filter
3	Overflow valve	6	Pump	9	Oil tank

EG-Konformitätserklärung EC Declaration of Conformity

Hiermit erklären wir,
We herewith declare,

Johannes J. Matthies GmbH & Co. KG
Hammerbrookstr. 97, Hamburg, Germany

dass die nachfolgend bezeichnete Maschine aufgrund ihrer Konzipierung und Bauart sowie in der von uns in Verkehr gebrachten Ausführung den einschlägigen grundlegenden Sicherheits- und Gesundheitsanforderungen der EG-Richtlinien entspricht.

that the following machine complies with the appropriate basic safety and health requirements of the EC Directive based on its design and type, as brought into circulation by us.

Bei einer nicht mit uns abgestimmten Änderung der Maschine verliert diese Erklärung ihre Gültigkeit.

In case of alteration of the machine, not agreed upon by us, this declaration will lose its validity.

Bezeichnung der Maschine: Motorrad Hebebühne
Machine Description: Motorcycle Bike Lift

Maschinentyp: JMP Lux 300 EH
Machine Type:


Handelsmarke: JMP
Trade name

Maschinen-Nr.:
Serial Number

Einschlägige EG-Richtlinien: EG-Maschinenrichtlinie 2006/42/EC
Applicable EC Directives: EC Machinery Directive: 2006/42/EC
EG-Niederspannungsrichtlinie 2014/35/EU
EC- Low voltage directive 2014/35/EU

Angewandte harmonisierte Normen: EN 1493:2010
Applicable Harmonized Standards: EN 60204-1/A1:2009

Herstellerunterschrift/Datum:
Authorized Signature/Date:

30.03.2016 

Angaben zum Unterzeichner:
Title of Signatory:

Dokumentationsbevollmächtigter Stefan Onken (Product Manager)
Hammerbrookstr. 97, 20097 Hamburg

Diese Konformitätserklärung wurde vom TÜV Product Service vorbereitet. Ein Muster dieses Produktes hat die Anforderungen der Konformitätsprüfung erfüllt. Diese Prüfung wurde beim TÜV Product Service aufgrund der zutreffenden Vorschriften der genannten Richtlinien durchgeführt.

This Declaration of Conformity has been prepared by TÜV Product Service. A specimen of this product meets the requirements of conformity test carried out by TÜV Product Service according with the applicable standards under the mentioned directives.

TÜV Product Service Prüfbericht Nr./TÜV Product Service report reference no.:

70.520.15.124.01-00
Date/Datum Apr. 21, 2016
Revision 2